

REGIONAL PACIFIC ISLANDER TASKFORCE



Regional Pacific Islander Taskforce (RPITF)

Tuberculosis Elimination Alliance (TEA)

Virtual Summit

November 2023



AGENDA

1

Who is RPITF

2

Who are Pacific Islanders

3

TB Project Scope

4

Timeline

5

Successes & Challenges



REGIONAL PACIFIC ISLANDER TASKFORCE



Who is the Regional Pacific Islander Taskforce?



**Taulama for
Tongans**



**Samoan Community
Development Center**



PACIFIC ISLANDER
WELLNESS INITIATIVE

**Pacific Islander
Wellness Initiative**

Background and Structure Template



Taskforce convened in 2015



Regional focus: 10 Bay Area counties (Alameda, Contra Costa, Marin, Napa, San Francisco, San Mateo, Santa Clara, Sana Cruz, Solano, Sonoma)



Community-informed, Community-driven process championed by Bay Area county public health department directors and organizational partners



Public Health Framework: Life Course Perspective and Social Determinants of Health

RPITF is Pacific Islander Started and Staffed



Taunu'u Ve'e, MA
Samoa, Fitiuta, Manu'a
Co-chair



Natalie Ah Soon, MPH
Samoa, Faleasao, Manu'a
Co-chair



Kekoa Lopez-Paguyo, MPH
Hawai'i, Oahu (Kalihi)
Program Manager



Toluk Maya Ito, BA
Palau, Peliliu, Ngardmau
Program Coordinator
Unincorporated Alameda Lead



Amelia Vahai, BA (c)
Tonga, Utungake, Tongoleleka,
Fasi Moe Afi
Santa Clara County Lead

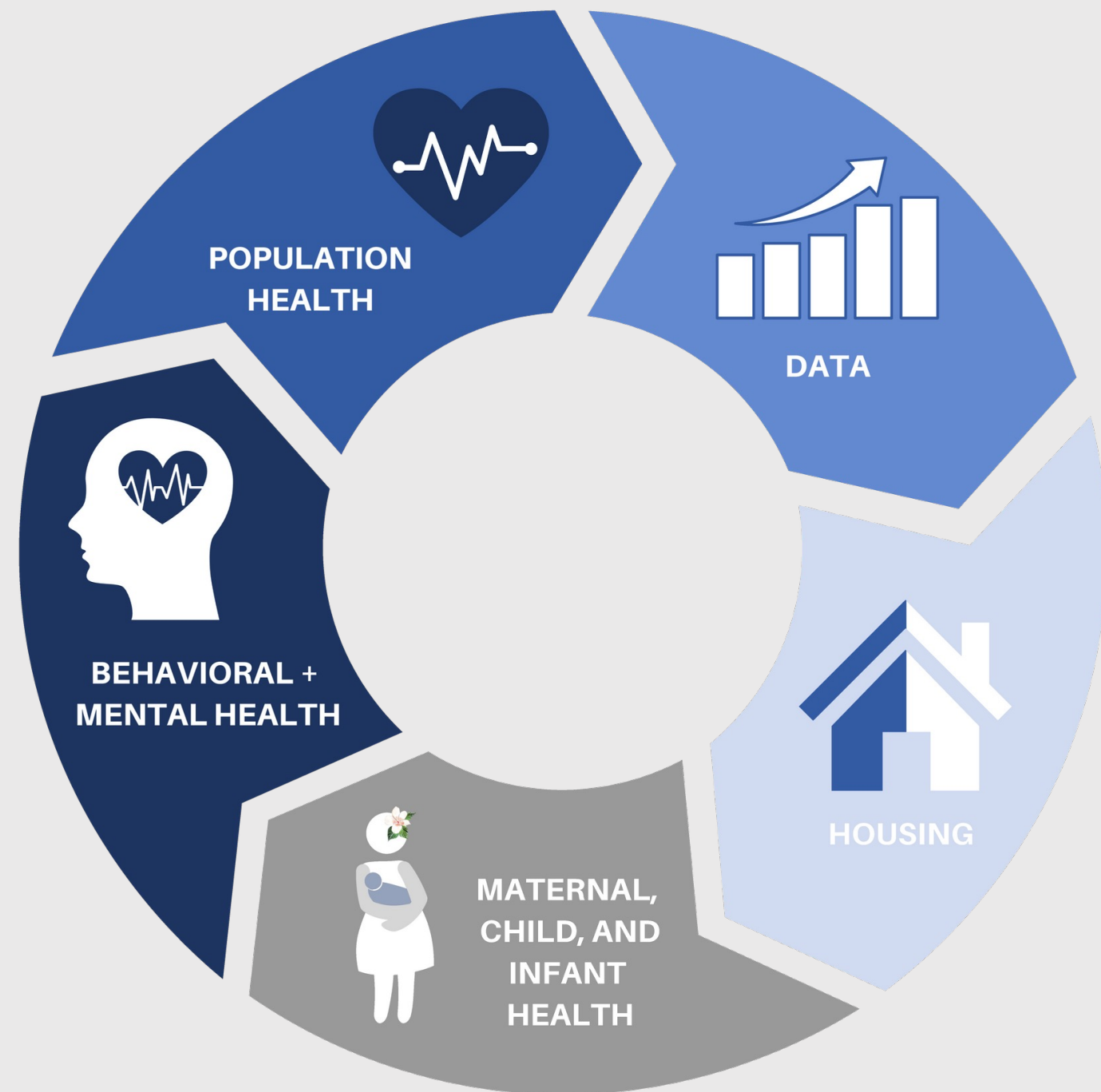


Pogisa Tau, BA
Samoa, Olosega & Tonga,
Maufanga
South Hayward Lead



Claiesina Fifita, BA
Tonga, Kolomotu'a, Fahefa
Logistics Lead/Community Health Worker

RPITF 5 Priority Areas



5 key public health initiatives for Pacific Islanders

- Population Health
- Data
- Housing
- Maternal, Child, and Infant Health
- Behavioral and Mental Health

What does RPITF do?



BUILD AWARENESS ABOUT THE DIVERSITY OF PACIFIC ISLANDER PEOPLES & CULTURE, HISTORICAL & COLONIAL IMPACTS, AND COMMUNITY HEALTH NEEDS



SUPPORT COUNTY PUBLIC HEALTH DEPARTMENTAL TEAMS IN PANDEMIC RESPONSE & RESILIENCE RECOVERY



SERVE ON MULTI-ETHNIC COALITIONS AND WITH COMMUNITY-BASED ORGANIZATIONAL PARTNERS TO PROMOTE PACIFIC ISLANDER HEALTH



DISAGGREGATE PACIFIC ISLANDER AND ASIAN DATA FOR REPORTING ON PACIFIC ISLANDER DEMOGRAPHIC DATA AND MATERNAL / INFANT HEALTH DATA

Who are Pacific Islanders?

POLYNESIA

The "Many" Islands

AOTEAROA (NEW ZEALAND),
FRENCH POLYNESIA,
NIUE,
HAWAI'I,
RAPA NUI,
SAMOA,
TONGA,
THE COOK ISLANDS,
TUVALU,
TOKELAU,
WALLIS AND FUTUNA

FUN FACT: THE ORIGIN OF WESTERN TATTOOING COMES FROM POLYNESIA, TATTOO STEMS FROM THE POLYNESIAN WORD TATAU

MICRONESIA

The "Small" Islands

NORTHERN MARIANA ISLANDS,
FEDERATED STATES OF MICRONESIA (YAP, CHUUK, POHNPEI, KOSRAE),
REPUBLIC OF MARSHALL ISLANDS,
REPUBLIC OF PALAU,
GUÅHAN (GUAM),
KIRIBATI,
NAURU

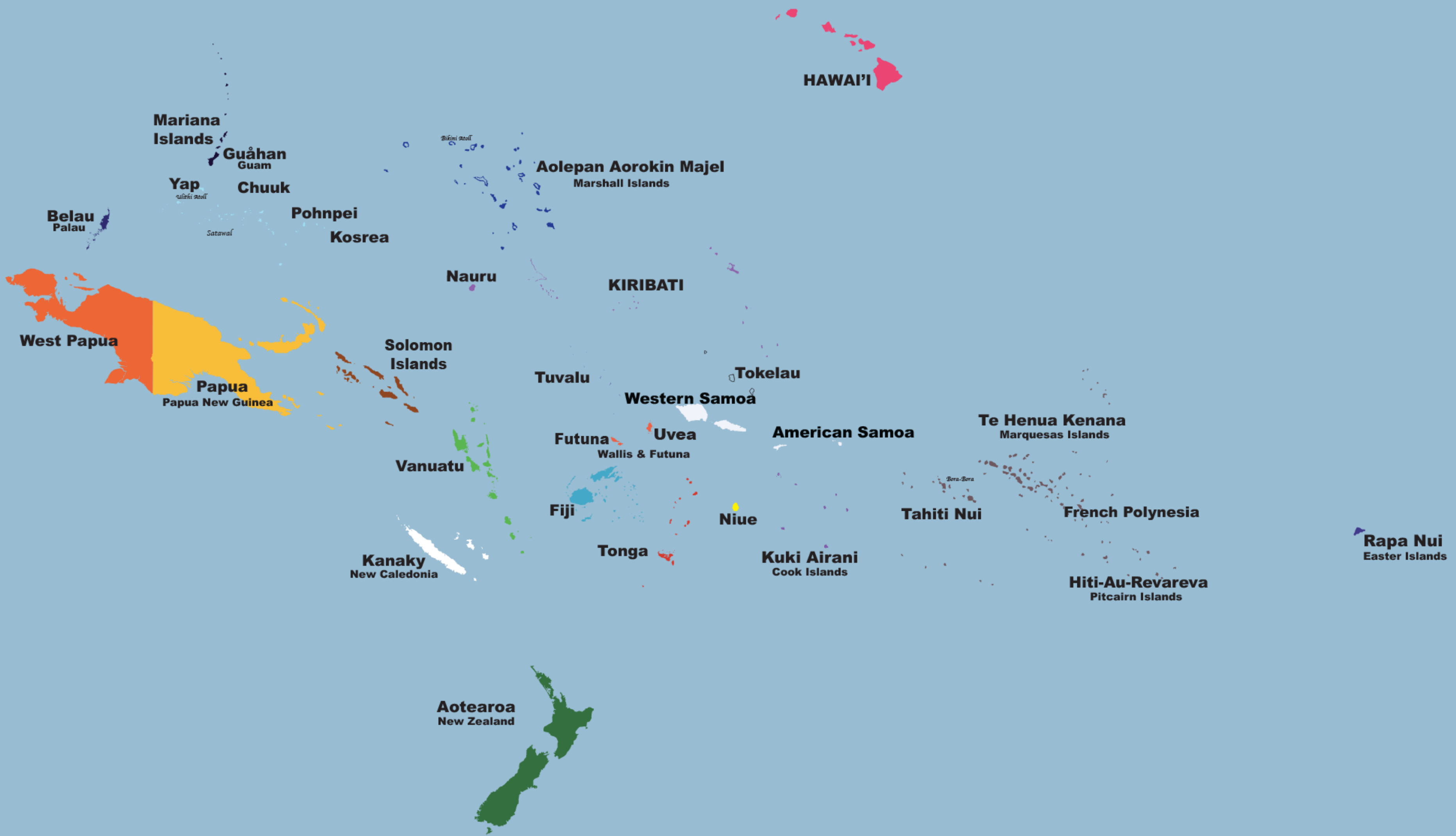
FUN FACT: A MICRONESIAN NAVIGATOR REVIVED TRADITIONAL VOYAGING IN THE PACIFIC ISLANDS

MELANESIA

The "Black" Islands

FIJI,
SOLOMON ISLANDS,
VANUATU,
NEW CALEDONIA,
PAPUA NEW GUINEA,
WEST PAPUA

FUN FACT: MELANESIA HAS THE MOST DIVERSE SET OF LANGUAGES IN THE WORLD, WITH OVER 1,300 DIFFERENT LANGUAGES



Terminology

Term: Native Hawaiian and Pacific Islander (NHPI)

Definition: In 1997, the Office of Management and Budget (OMB) mandated the federal use of a new racial category when it separated the Asian or Pacific Islander category into the following two categories: 1) The Asian category, defined as “A person having origins in any of the original peoples of the Far East, Southeast Asia, or the Indian subcontinent including, for example, Cambodia, China, India, Japan, Korea, Malaysia, Pakistan, the Philippine Islands, Thailand and Vietnam.”; and 2) **The Native Hawaiian or Pacific Islander category, defined as “A person having origins in any of the original peoples of Hawaii, Guam, Samoa, or other Pacific Islands.”** (The term "Native Hawaiian" does not include individuals who are native to the State of Hawaii by virtue of being born there (OMB, 1997)).

Tuberculosis Elimination Alliance (TEA)

Mini-grant Program 2022-2023 Project Scope

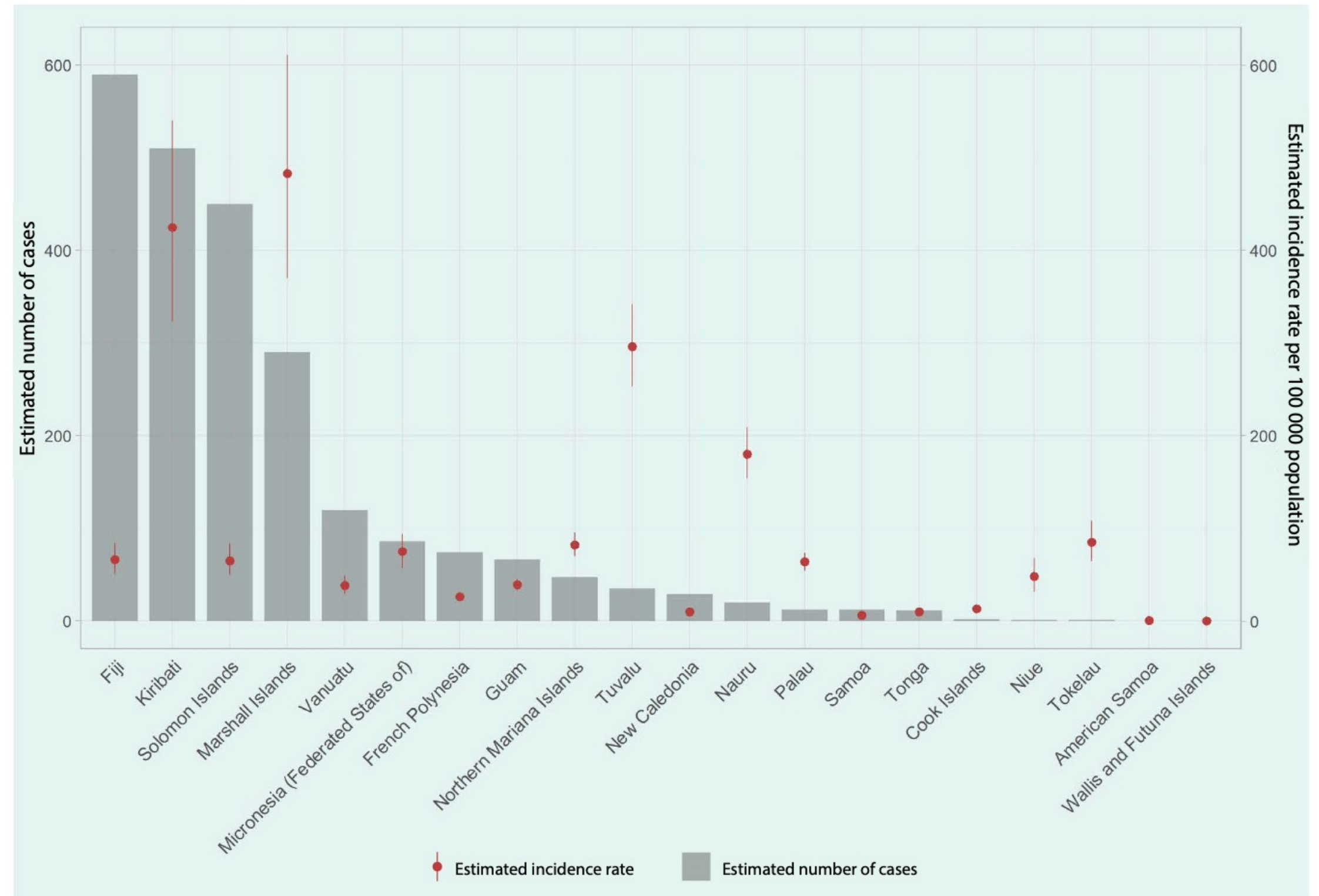
Community Engagement and Education

Conducting culturally and linguistically appropriate public education & outreach on LTBI/TB risk, testing and treatment (e.g., traditional and non-traditional outreach methods)

Developing local partnerships to increase visibility and dissemination of messages regarding stigma related to LTBI/TB in the community

Why focus on Fijian community members for TB/LTBI health education in Northern California?

Fig. 2. Estimated number of TB cases and TB incidence rate per 100 000 population in Pacific island countries and areas, 2020

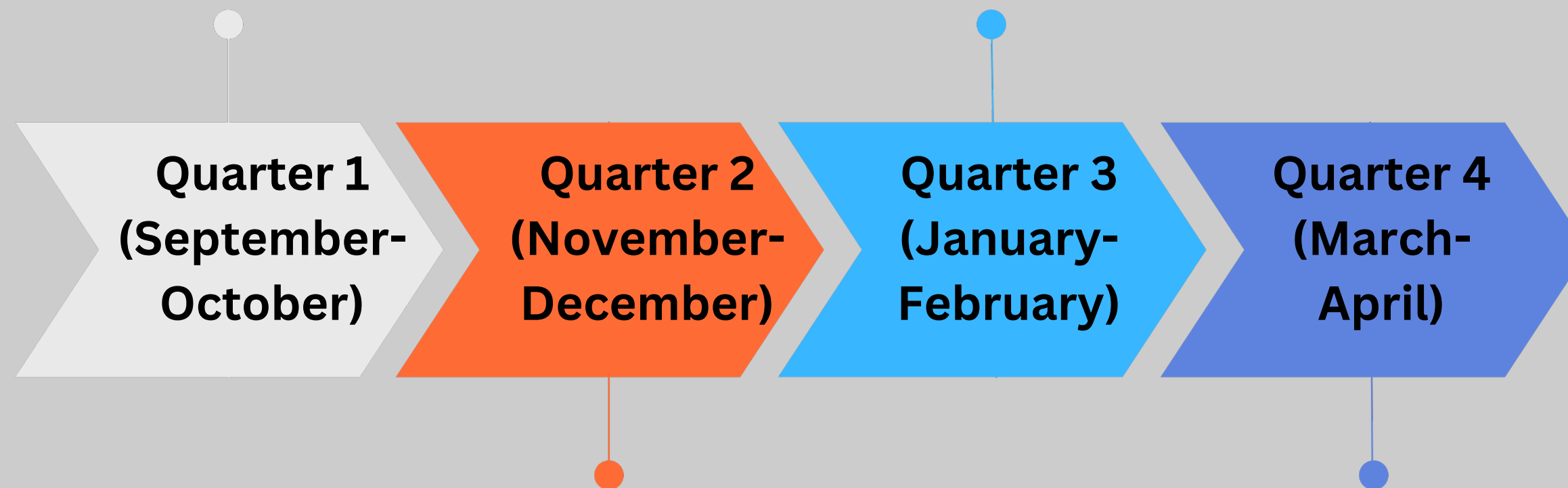


TEA 2023-2024 Project Timeline Overview



Q1: Kickoff meeting with Fijian Health Ministry church and Fijian community partners; Meeting NHPI grantees, Contracting with Fijian community outreach “consultants”

Q3: Plan and implement 2 TB/LTBI workshop to be delivered virtually/in-person at a Fijian church with public health officials and free clinic health partners



Q2: Connect with CA public health department TB control divisions. Host a TB/LTBI “talk story” with Fijian church leaders virtually in order to plan future work

Q4: Plan and implement 1 health promotion event providing information re: TB screening/treatment access and other relevant Fijian community health needs

Successes & Challenges

Successes

- Collaborating in co-equal partnership with the recently formed “Fijian Health Ministry” on a public health prevention project
- Advocating for TB/LTBI health education and access to care to screening and treatment services for Melanesian Pacific Islander communities in the Bay Area
- Learning from other current and prior TEA grantees representing that NHPI community, as well as Asian, Black, and Latinx communities

Successes & Challenges

Successes

- Collaborating in co-equal partnership with the recently formed “Fijian Health Ministry” on a public health prevention project
- Advocating for TB/LTBI health education and access to care to screening and treatment services for Melanesian Pacific Islander communities in the Bay Area
- Learning from other current and prior TEA grantees representing that NHPI community, as well as Asian, Black, and Latinx communities

Challenges

- Budget justification revisions and contracting process with our organizational fiscal sponsors has taken more time than expected
- Wanting to provide more public health promotion, health education, and access to more than simply TB/LTBI infectious disease alone
- RPITF does not have a clinical delivery arm, so often must build on public health departmental, free clinic model, and FQHC partners to support in vaccination, screening, and health promotion