




# *Welcome!*

2021 Hep B United/TB Elimination Alliance Summit - Centering  
Community to Advance Health Equity  
November 2-3, 2021



**HEARTLAND**  
NATIONAL TB CENTER  
THE UNIVERSITY OF TEXAS HEALTH SCIENCE CENTER AT TYLER

1



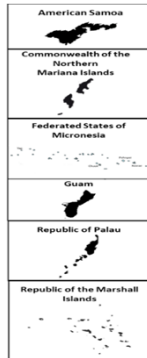
## **Mission**

Our mission at Heartland National TB Center is to build capacity with our partners thru expert medical consultation, cutting edge trainings, and innovative product development. We strive to provide excellence, expertise and innovation in training, medical consultation, and product development to reduce the impact of tuberculosis in our region.

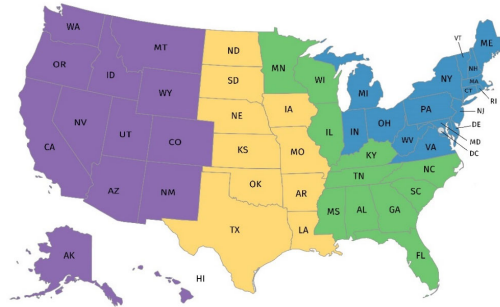
2

# Heartland Region

- Arkansas
- Iowa
- Kansas
- Louisiana
- Missouri
- Nebraska
- North Dakota
- Oklahoma
- South Dakota
- Texas
- City of Houston



# Tuberculosis Center of Excellence



### All 4 TB Centers of Excellence

- Curry International TB Center
- Heartland National TB Center
- Southeastern National TB Center
- Global TB Institute
- Jointly Served by all 4 TB Centers



# Services

Medical Consultation · Training · Product Development





## Medical Consultation

**Warm Line**

- 1-800-TEX-LUNG (1-800-839-5864)
  - Monday – Friday
  - 8:00 am-5:00 pm CT
- Response with in 24 business hours
  - Call Tuesday at 9:00 am; returned call Wednesday by 9:00 am
  - Call Friday at 3:00 pm; returned call by Monday 3:00 pm



5



## Medical Consultation

### Contact information

<p><b>Medical Director</b> Barbara Seaworth, MD (210) 531-4541 <a href="mailto:Barbara.Seaworth@dshs.texas.gov">Barbara.Seaworth@dshs.texas.gov</a></p>	<p><b>Assistant Medical Director</b> Lisa Y. Armitige, MD, PhD (210) 531-4548 <a href="mailto:Lisa.Armitige@dshs.texas.gov">Lisa.Armitige@dshs.texas.gov</a></p>	
<p><b>Nurse Consultant / Educator</b> Debbie Davila, MSN, RN (210) 531-4580 <a href="mailto:Debbie.davila@uthct.edu">Debbie.davila@uthct.edu</a></p>	<p><b>Nurse Consultant / Educator</b> Marybel Monreal, BSN, RN (210) 531-4539 <a href="mailto:Marybel.Monreal@uthct.edu">Marybel.Monreal@uthct.edu</a></p>	<p><b>Nurse Consultant / Educator</b> Catalina Navarro, BSN, RN (210) 531-4569 <a href="mailto:Catalina.Navarro@uthct.edu">Catalina.Navarro@uthct.edu</a></p>
<p><b>Heartland National TB Center Website</b> <a href="https://heartlandntbc.org/">https://heartlandntbc.org/</a></p>		

6

## Training and Education

**Heartland** conducts several trainings throughout the year.

Our core courses are held 2-3 times a year in San Antonio, TX and include:

- **Contact Investigation**
- **Introduction to TB Nurse Case Management Online**
- **TB Nurse Case Management**
- **Clinical TB Intensive**

Other courses are developed and implemented in collaboration with the host state. We also host webinars covering a variety of topics.



7

## Technical Assistance

- Course development
- Resources for programs/partners to deliver trainings and planning calls



**training resources**  
 tools instruments support flip charts  
 online tools assessments books



9

## Upcoming Activities 2021



### *Bi-State Infectious Disease Conference*

November 5, 2021 / St. Louis, MO

### *Hot Topics in TB Webcast Series: Diabetes & Tuberculosis – The Real Story*

November 18, 2021 / 12:00 pm – 1:15 pm CST

### *TB 101 for Nurses*

A series of pre-recorded presentations covering 6 essential TB topics

Please contact [delphina.sanchez@uthct.edu](mailto:delphina.sanchez@uthct.edu) for more information

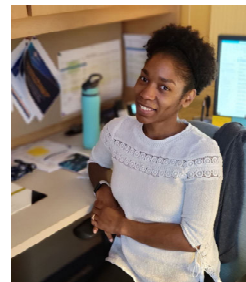
10

## Training Contact information



**Director of Education**  
Delphina Sánchez, MA  
(210) 531-4528

[delphina.sanchez@uthct.edu](mailto:delphina.sanchez@uthct.edu)



**Training & Education Developer**  
RoShonda Booker, BS  
(210) 531-4543

[roshonda.booker@uthct.edu](mailto:roshonda.booker@uthct.edu)

11

## Mini-Fellowships

- Clinical Mini-Fellowship for Physicians
- Clinical Mini-Fellowship for Nurses



**For additional information**  
Halbert Brown, DBA(c), MBA  
[halbert.brown@uthct.edu](mailto:halbert.brown@uthct.edu)

12

## Products

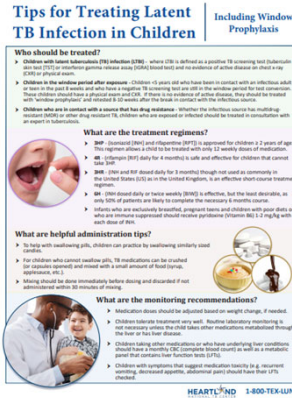
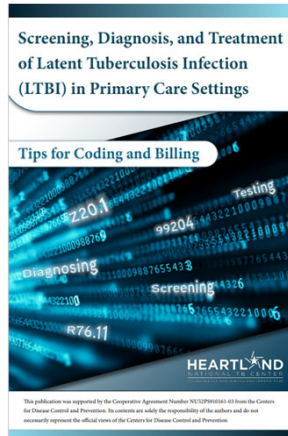
**Heartland** offers a variety of products which you can order or download straight from our website.



13

# Newest Products

## Now available!



<https://www.heartlandntbc.org/products.html>

## Heartland Newsletter: TBeat



- New issues released bi-annually (Summer & Winter)
    - Case presentation highlights
    - Regional highlights
    - Resources
    - Relevant journal publications
  - Previous issues available on Heartland Website
  - Have a suggestion for TBeat?
- Send it to Alysia Wayne at [alysia.wayne@uthct.edu](mailto:alysia.wayne@uthct.edu)



# Stop the Stigma



**Our Challenge to You**

Commit to using language that is patient centered, appropriate and sensitive and represents the dignity of people with TB and their families.

Sign the pledge: By signing this pledge, you are committing to stop the use of stigmatizing language when caring for persons and their families whose lives have been affected by TB. As a public health worker and leader in the field of tuberculosis, you pledge to adopt patient centered terminology that is appropriate, sensitive, and represents the dignity of people with TB and their families.

**Pledge Today!**

\* Email Address

\* First Name

\* Last Name

\* Company

HNTC can use your picture to promote project? y/n

We will fill out a pledge card with your name on it and add it to other pledges. This banner is located at Heartland National TB Center on the campus of Texas Center for Infectious Disease a TB hospital located in San Antonio, Texas. This banner is visible to patients, health care workers, and visitors to the Heartland center.

Take a picture. Take a picture holding your "I Pledge" sign and email it to [edgar.salinas@hntc.edu](mailto:edgar.salinas@hntc.edu). We will add you to our Facebook page and Twitter feed.

Challenge others: Challenge others to join in your commitment. Let them know that you have made the commitment and would

<https://www.heartlandntbc.org/stopthestigma/index.php>

16

## Stop the Stigma: Eliminating Stigmatizing Language

### "Every Word Counts"

In the publication, Every Word Counts: Suggested Language and Usage for Tuberculosis Communications, the authors describe how judgmental terms and negative connotation of words such as 'defaulter' and 'suspect' place blame for the disease and responsibility for adverse treatment outcomes on the patient.<sup>1</sup>

In order to assist in implementing a change in the use of stigmatizing language, Heartland has committed to join forces with the Global TB Community, the International Union Against TB and Lung Disease, and the National Society of TB Clinicians. Heartland, with support from the Treatment Action Group, developed this quick reference tool to aid in identifying suggested replacement language as a reminder of how our words may affect others.

<sup>1</sup>From "Suggested language and usage for TB care, communications and publications" page 2

### Where it began

Suggested language and usage for tuberculosis (TB) care, communications and publications.

Open letter: Retiring stigmatizing and criminalizing language from the global TB discourse

Language in TB services: can we change to patient-centered terminology and stop the paradigm of blaming the patients?

Civil society calls for the retirement of stigmatizing and criminalizing language from the global TB discourse.

Supported by Treatment Action Group (TAG)

## Eliminating Stigmatizing Language

### Non-hurtful Replacement Language

Key Terms suggested by the Stop TB Partnership

Use this....	Not that....
<b>Adherence / Non-adherence</b>	Compliance / Non-compliance
<b>Person lost to follow up</b>	Defaulter
<b>TB Prevention and Care</b>	TB Control
<b>Person to be evaluated for TB</b>	TB Suspect
<b>HIV-Positive</b>	HIV-infected

### HNTC Survey Results

Language suggested by participants

Use this.....	Not that....
<b>TR Infection</b>	Latent TR
<b>Lack of housing; Under-housed; People experiencing homelessness</b>	Homeless/Homelessness
<b>Immigrant</b>	Alien
<b>Undocumented</b>	Illegal; Illegal alien
<b>Person with TB disease</b>	TB case
<b>Treatment failed</b>	Treatment failure
<b>Missed doses/Non-adherent</b>	Delinquent
<b>Contact Analysis; Contact Elicitation; Contact Identification</b>	Investigation; Investigate
<b>Exposed to TB</b>	TB contact
<b>Tuberculosis</b>	Consumption; White Plague

Stigmatizing language and suggested replacements was identified by an HNTC survey requesting pledgers to identify language that they personally experienced or witnessed.  
\*\*This list is non-inclusive.

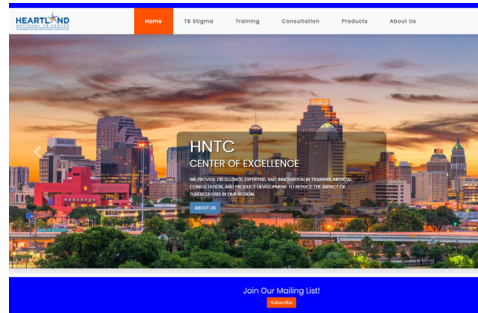
Supported by Treatment Action Group (TAG)



17



## Visit us on the Web!



[www.heartlandntbc.org](http://www.heartlandntbc.org)

- ✓ Upcoming and archived trainings
- ✓ Apply for mini fellowships
- ✓ Information about consultations
- ✓ Access and order our products
- ✓ Contact information for all Heartland Staff

18

## Points of Contact



Halbert Brown, DBA(c), MBA  
Executive Director  
210-531-4542  
[halbert.brown@uthct.edu](mailto:halbert.brown@uthct.edu)



Delphina Sánchez, MA  
Director of Education  
210-531-4528  
[delphina.sanchez@uthct.edu](mailto:delphina.sanchez@uthct.edu)

19

# Thank you!

Delphina Sanchez, MA  
Director of Education  
Heartland National TB Center  
[delphina.Sanchez@uthct.edu](mailto:delphina.Sanchez@uthct.edu)  
210-531-4528

